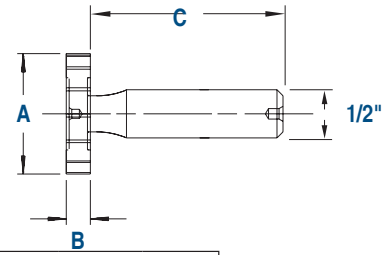
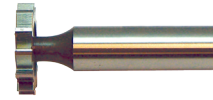




Woodruff Keyseat Cutters — Shank Type

KEO woodruff keyseat cutters are extremely versatile profile milling cutters. Although originally designed to mill standard woodruff keyseat, they now satisfy a variety of applications from milling slots to milling threads. For set information see page 47.



American Standard #	A Head Dia.	B Face Width	C OAL	HSS		HSS-LH	Cobalt		# of Teeth		Carbide Tipped		
				Straight Tooth	Stagger Tooth	Straight Tooth	Straight Tooth	Stagger Tooth	Straight	Stagger	Straight Tooth	Stagger Tooth	# of Teeth
202	1/4	1/16	2-1/16	62010	62015	93928	93932	93933	8	6			
202 1/2	5/16	1/16	2-1/16	62020	62025	93934	93938	93939	8	6			
302 1/2	5/16	3/32	2-3/32	63020	63025	93940	93944	93945	8	6			
203	3/8	1/16	2-1/16	62030	62035	93946	93950	93951	8	6			
303	3/8	3/32	2-3/32	63030	63035	93952	93956	93957	8	6			
403	3/8	1/8	2-1/8	64030	64035	93958	93962	93963	8	6			
204	1/2	1/16	2-1/16	62040	62045	93964	93968	93969	10	8	93971	93972	6
304	1/2	3/32	2-3/32	63040	63045	93970	93974	93975	10	8	93977	93978	6
404	1/2	1/8	2-1/8	64040	64045	93982	93986	93987	10	8	93983	93984	6
305	5/8	3/32	2-3/32	63050	63055	93976	93980	93981	10	8	93989	93990	6
405	5/8	1/8	2-1/8	64050	64055	93988	93992	93993	10	8	93995	93996	6
505	5/8	5/32	2-5/32	65050	65055	94000	94004	94005	10	8	94001	94002	6
605	5/8	3/16	2-3/16	66050	66055	94006	94010	94011	10	8	94007	94008	6
406	3/4	1/8	2-1/8	64060	64065	93994	93998	93999	10	8	94013	94014	6
506	3/4	5/32	2-5/32	65060	65065	94012	94016	94017	10	8	94019	94020	6
606	3/4	3/16	2-3/16	66060	66065	94030	94034	94035	10	8	94025	94026	6
806	3/4	1/4	2-1/4	68060	68065	94018	94022	94023	10	8	94031	94032	6
507	7/8	5/32	2-5/32	65070	65075	94024	94028	94029	12	10	94037	94038	6
607	7/8	3/16	2-3/16	66070	66075	94036	94040	94041	12	10	94043	94044	6
707	7/8	7/32	2-7/32	67070	67075	94042	94046	94047	12	10	94049	94050	6
807	7/8	1/4	2-1/4	68070	68075	94072	94076	94077	12	10	94055	94056	6
608	1	3/16	2-3/16	66080	66085	94048	94052	94053	12	10	94061	94062	8
708	1	7/32	2-7/32	67080	67085	94054	94058	94059	12	10	94067	94068	8
808	1	1/4	2-1/4	68080	68085	94078	94082	94083	12	10	94073	94074	8
1008	1	5/16	2-5/16	60080	60085	94126	94130	94131	12	10	94079	94080	8
1208	1	3/8	2-3/8	62080	62085	94060	94064	94065	12	10	94085	94086	8
609	1-1/8	3/16	2-3/16	66090	66095	94066	94070	94071	12	10	94091	94092	8
709	1-1/8	7/32	2-7/32	67090	67095	94084	94088	94089	12	10	94097	94098	8
809	1-1/8	1/4	2-1/4	68090	68095	94090	94094	94095	12	10	94103	94104	8
1009	1-1/8	5/16	2-5/16	60090	60095	94132	94136	94137	12	10	94109	94110	8
610	1-1/4	3/16	2-3/16	66100	66105	94096	94100	94101	14	12	94115	94116	8
710	1-1/4	7/32	2-7/32	67100	67105	94102	94106	94107	14	12	94121	94122	8
810	1-1/4	1/4	2-1/4	68100	68105	94108	94112	94113	14	12	94127	94128	8
1010	1-1/4	5/16	2-5/16	60010	60015	94138	94142	94143	14	12	94133	94134	8
1210	1-1/4	3/8	2-3/8	62100	62105	94156	94160	94161	14	12	94139	94140	8
811	1-3/8	1/4	2-1/4	68110	68115	94114	94118	94119	14	12	94145	94146	8
1011	1-3/8	5/16	2-5/16	60110	60115	94144	94148	94149	14	12	94151	94152	8
1211	1-3/8	3/8	2-3/8	62110	62115	94162	94166	94167	14	12	94157	94158	8
812	1-1/2	1/4	2-1/4	68120	68125	94120	94124	94125	16	14	94163	94164	8
1012	1-1/2	5/16	2-5/16	60120	60125	94150	94154	94155	16	14	94169	94170	8
1212	1-1/2	3/8	2-3/8	62120	62125	94168	94172	94173	16	14	94174	94175	8
Cutter Diameter										Width			
1/4" up to and including 3/4"				+0.010"		+0.015"		1/16" up to and including 5/32"		+0.0000"		-0.0005"	
7/8" up to and including 1-1/8"				+0.012"		+0.017"		3/16" up to and including 7/32"		-0.0002"		-0.0007"	
1-1/4" up to and including 1-1/2"				+0.015"		+0.020"		1/4"		-0.0003"		-0.0008"	
Shank Diameter													
				-0.0001"		-0.0005"		5/16"		-0.0004"		-0.0009"	
								3/8"		-0.0005"		-0.0010"	

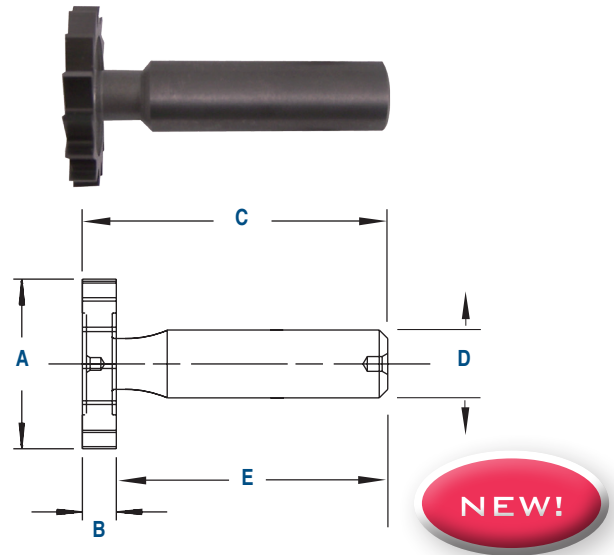
All dimensions in inches. Many tools are available with additional coatings. Please call for quote.



Carbide Woodruff Keyseat Cutters — Shank Type

	A	B	C	Carbide Head	Solid Carbide
American Standard #	Head Dia.	Face Width	OAL	Straight Tooth	Straight Tooth
204	1/2	1/16	2-1/16	61000	
304	1/2	3/32	2-3/32	61001	
404	1/2	1/8	2-1/8	61002	
305	5/8	3/32	2-3/32	61003	
405	5/8	1/8	2-1/8	61004	
505	5/8	5/32	2-5/32	61005	
605	5/8	3/16	2-3/16	61006	
406	3/4	1/8	2-1/8	61007	
506	3/4	5/32	2-5/32	61008	
606	3/4	3/16	2-3/16	61009	
806	3/4	1/4	2-1/4	61010	
507	7/8	5/32	2-5/32	61011	
607	7/8	3/16	2-3/16	61012	
707	7/8	7/32	2-7/32	61013	
807	7/8	1/4	2-1/4	61014	
608	1	3/16	2-3/16	61015	
708	1	7/32	2-7/32	61016	
808	1	1/4	2-1/4	61017	
1008	1	5/16	2-5/16	61018	
1208	1	3/8	2-3/8	61019	
609	1-1/8	3/16	2-3/16		61020
709	1-1/8	7/32	2-7/32		61021
809	1-1/8	1/4	2-1/4		61022
1009	1-1/8	5/16	2-5/16		61023
610	1-1/4	3/16	2-3/16		61024
710	1-1/4	7/32	2-7/32		61025
810	1-1/4	1/4	2-1/4		61026
1010	1-1/4	5/16	2-5/16		61027
1210	1-1/4	3/8	2-3/8		61028
811	1-3/8	1/4	2-1/4		61029
1011	1-3/8	5/16	2-5/16		61030
1211	1-3/8	3/8	2-3/8		61031
812	1-1/2	1/4	2-1/4		61032
1012	1-1/2	5/16	2-5/16		61033
1212	1-1/2	3/8	2-3/8		61034

All dimensions in inches.
 Shank Diameter (D) is 1/2".
 Shank Length (E) is 2".
 Many tools are available with additional coatings.
 Please call for quote.



Metric Keyseat Cutters — HSS Shank Type DIN850 – Form A, B

A	B	C	D	# of Teeth			
				Straight	Stagger	Straight	Stagger
4.5	1	50	6	68200	68201	6	4
7.5	1.5	50	6	68210	68211	8	6
7.5	2	50	6	68220	68221	8	6
10.5	2	50	6	68230	68231	8	6
10.5	2.5	50	6	68240	68241	8	6
10.5	3	50	6	68250	68251	8	6
13.5	3	56	10	68260	68261	10	8
13.5	4	56	10	68270	68271	10	8
16.5	3	56	10	68280	68281	10	8
16.5	4	56	10	68290	68291	10	8
16.5	5	56	10	68300	68301	10	8
19.5	4	63	10	68310	68311	10	8
19.5	5	63	10	68320	68321	10	8
19.5	6	63	10	68330	68331	10	8
22.5	5	63	10	68340	68341	12	10
22.5	6	63	10	68350	68351	12	10
22.5	8	63	10	68360	68361	12	10
25.5	6	63	10	68370	68371	12	10
28.5	6	71	10	68380	68381	12	10
28.5	8	71	10	68390	68391	12	10
28.5	10	71	12	68400	68401	12	10
32.5	7	71	12	68410	68411	14	12
32.5	8	71	12	68420	68421	14	12
32.5	10	71	12	68430	68431	14	12
45.5	10	71	12	68440	68441	18	16

All dimensions in millimeters.